



TAMARA COMOLLI FINE JEWELRY COLLECTION



BIOGRAPHY TAMARA COMOLLI

Personal Data:

Tamara Comolli was born in Munich and spent her childhood living in Spain, France and Gibraltar. Today, she resides in the picturesque village of Lake Tegernsee south of Munich, Germany where she lives with her partner and their young son Timmi.

Education:

Tamara studied Business Administration and Advertising at the University of Munich and spent five years working for a management consulting and advertising company. In 1991 she left the business world to pursue her passion for gemstones and jewelry.

Business:

In the beginning, Tamara's enthusiasm for colored gemstones was more of a hobby than a business. She studied gems, travelled to the mines, and collected her favorite stones. In 1992, combining her business acumen with her passion and knowledge of gems, she launched the TAMARA COMOLLI® FINE JEWELRY COLLECTION. From the very start, the intention was to create a brand that appeals to an international female clientele.

Attending first international shows 1993 both in New York and Las Vegas, the US market was conquered within a short period. First Basel show was 1996 and from here the success story continued gaining established accounts such as Neiman Marcus in the USA and Bucherer in Switzerland amongst other leading and trendsetting jewelers.

The company's headquarter is at the Lake Tegernsee where the idyllic and peaceful surroundings are a constant source of inspiration for the designer and her talented team of employees. Tamara Comolli's design philosophy guides her design team and production facility in Milan, Italy.

2008 finally, the first stand alone boutique has opened its doors in Southampton, NY/USA. 2009 the retail operation was followed by the store in Rottach Egern on the Lake Tegernsee in Bavaria.



TAMARA COMOLLI

FINE JEWELRY COLLECTION

COMPANY PROFILE

The TAMARA COMOLLI® FINE JEWELRY COLLECTION GmbH & Co. KG was founded a little more than 17 years ago yet it now resembles a much larger and rapidly expanding company.

Tamara Comolli's love for gemstones and her vision for a collection began innocently. From her childhood, one can see the influence of a father who managed several casinos in France, Spain and Gibraltar. She was raised in the glamorous world of European high-society surrounded by the trappings of wealth and luxurious jewelry. It was inevitable that this time of influence and cosmopolitan style would lead her into this profession.

Thus was born the innovative creations of the TAMARA COMOLLI® FINE JEWELRY COLLECTION which combines a sense of understatement and playfulness.

"My jewelry should be worn every day – away from intimidation and with a casual understatement even for very high end items! Jewelry does not belong in a safe and does not need a special occasion. Women want to express their personality not only with their clothing, but also with their choice of jewelry. TAMARA COMOLLI should underline the individuality of the woman and allow the jewelry to become a casual presence. At the same time I am looking for a timeless yet new realization – a *refined classic*."

Tamara Comolli founded her own jewelry collection through the world of gemstones. As a child she had created modern jewelry from family heirlooms dedicating herself to the world of endless color. Even though she works with a wide variety of different colored gemstones, her true passion still remains the sapphire.

It is remarkable that Tamara Comolli never studied gemology or jewelry design. If you know the creations and the soul of the collection, you then realize that it is just for this reason that Tamara Comolli is so talented; the jewelry comes from her heart and soul and not from a sketch book.

Tamara Comolli's knowledge is enhanced by her close relationship with a network of goldsmiths with whom she develops each prototype. This collaboration leads to the creation of new concepts. Over the years Tamara Comolli, while becoming a specialist in sapphires, has a history of tales for the jewelry she creates.

As women are still rare in this profession, on one of her first buying trips she encountered her own challenge. As she was looking for sapphires, a dealer presented stones to her which she had rejected the previous day, thinking that she would not notice. But she did notice, and thus began her journey to respect in the field. To this day she continues to travel the world buying exquisite stones for her collection and for one-of-a-kind pieces.

In addition to her natural style, her studies of economics and business administration gave her the foundation needed to start her own business and present her first jewelry collection in 1992.

The first TAMARA COMOLLI Design was the CURRICULUM® VITAE Bangle and plays an important role in the biography of Tamara Comolli. Her CURRICULUM® VITAE rings have already become classics in the collection. The different colored gemstones show the individuality at its best within this design. Each gemstone slides on a track and flows, just as life does.



TAMARA COMOLLI FINE JEWELRY COLLECTION

In 1992 Tamara Comolli founded the TAMARA COMOLLI® FINE JEWELRY COLLECTION. While she started as a single artist, she already had the vision of her own company and brand. The company now has a head office with design development, marketing department, quality control, distribution and stone buying based in Germany at the Lake Tegernsee, south of Munich. Production is primarily based in Italy. Naturally, the production and design are created in close proximity with oversight by Tamara Comolli, while quality control and distribution are handled by the production and sales department in the head office.

Representation in the United States started ten years ago. Following the initial staging in New York City the brand was located in Miami and now operates out of the brand new flagship store in Southampton, NY. "We chose this location for the first stand alone TAMARA COMOLLI store because of its holiday spirit and its international society appeal."

With steady growth continuing within the company, the diversity of the collection with its unique designs grows as well. Each collection has a name which tells a story and shows the playfulness and originality of the designer.

The company logo, a drop and the color turquoise represent the sensuality of the collection. The light blue to turquoise colors reflect two things in the life of Tamara Comolli: her love of the intensely colored ocean meeting beautiful beaches, and her desire for warm destinations. The Signature Drop thus represents more than just her company logo. It embodies water. As a ring, a clasp, a stone setting or even as a *golden* pendant for every day, the drop appears throughout the collection. It is the hallmark of each design since the very beginning.

Classic bracelets are defined by TAMARA COMOLLI with precious stones in her design ALWAYS DIAMONDS or HOURGLASS®. The bracelets of her MIKADO collection are now very recognizable and part of the company logo featuring the acorn shape gemstones – that have become signature elements within her designs. The GRAPES® collection shows pearls in a different light and with her ROULETTE® collection she has re-launched the coin bracelets. The SIGNATURE Collection combines the simple elegance of the Signature Drop and continues with gemstones in the playful and feminine SNOWFLAKES collection.

TAMARA COMOLLI jewelry is known to create *conversation pieces*. This also becomes apparent in the 3D®'s pendants which combine three gemstones in a way which exhibits the stone and not the setting. It can be worn on a simple leather ribbon on the wrist, this form led to the creation of a fan club, making the pendants quite recognizable. The key to the collection is the ability to combine the separate pieces, always creating a new look and a new design.

The collection is playful, inventive, casual yet elegant displaying bright colors, all in an underlying combination and symmetry. These are TAMARA COMOLLI's Color Stories: Caribbean, Mandarin, Hollywood, Marrakech, Candy, Indian Summer, Sun, Sixties, Bohemian, Hamptons, Baby and Wildberry or Chocolat are simply a taste of the over 20 different stories. Everyone can find and create their own TAMARA COMOLLI look.



TAMARA COMOLLI FINE JEWELRY COLLECTION

For those who live their passion for high end jewelry, Tamara Comolli can also design and create their original and unique pieces, our *Collector's Item*.

With this development and production, Tamara Comolli is the enterprising and creative leader of the TAMARA COMOLLI® FINE JEWELRY COLLECTION. But as she readily states, the true essence of the collection is the jewelry itself.

Supported by a very stringent and strong design philosophy the design team of TAMARA COMOLLI has continued developing new additions for the Collection: in 2010 the PAISLEY Collection with a very ornamental Signature Drop has been established. Now in 2011 followed by new designs finding the link to the classical bestsellers of the brand.



TAMARA COMOLLI FINE JEWELRY COLLECTION

LATEST NEWS: BOUTIQUES AND COLLECTION

2009: A very important year for the TAMARA COMOLLI brand, which revolutionized the fine jewelry approach: TAMARA COMOLLI introduced at Baselworld the Hippie Glam Collection – using gemstones that had previously never found their justification in fine jewelry, such as Ocean Jasper and green Turquoise from Turkmenistan and Tibet. Included Tourmaline cabochon material found a totally new venue in the Talisman Collection.

The Hamptons Flagship Boutique came into the forefront during its first summer season in 2009, and is now part of the Collections' image to the world. Almost 20 years of brand development now comes together in the USA, showcasing Tamara's vision of fine jewelry: fun, free from intimidation, ageless and most of all, timeless.

2010: The Collection presents Paraiba Tourmaline as one of Tamara Comolli's personal favourite high-end gems; considered more precious than diamonds, TAMARA COMOLLI features a one-of-a-kind Collection with rings and pendants, all beautifully handcrafted.

Also in 2010, TAMARA COMOLLI presents the German Flagship Boutique located on the picturesque Lake Tegernsee, in Rottach-Egern, a historic collection of villages in the area known as "the Hamptons of Germany".

The 2010 Collection presents more news than ever, filling many niches within the assortment of merchandise. An entirely new grouping, "Paisley", utilizes the Signature Drop design in a very delicate, fine, flowing way; presenting finally Chandelier Earrings, true to the Comolli spirit. Beautifully crafted and comfortably lightweight, "Paisley" features diamonds combined with blueish-glowing Labradorite, warm Brown Moonstones and of course signature Turquoise.

The Paisley, as a design element, also finds itself in an entirely new, very 'Hippie-style' collection: double-wrapped "LEATHER LOOP" bracelets feature fun 18K dangling elements and clasp. A Peace sign and a 'Hippie Flower' accessorize this timely bracelet, with more slide-on options to come.

2011: Lots of news are launched combining the leading classical Collection into new dimensions: the line of famous CURRICULUM® VITAE rings is enlarged; LEATHER LOOP becomes fully integrated and a new shop-in-shop presentation for jewelry partners is presented. New Color Stories such as Empire using pure white Cacholong set in rose gold and the trendy Camouflage look. Some very high end one-of-a-kind rings with stunning gemstones round up the portfolio. For the world of our jewellers we are introducing a shop-in-shop concept design for the brand vision at the jeweller.



TAMARA COMOLLI FINE JEWELRY COLLECTION

EUROPE

Tamara Comolli ... goes Tegernsee!

TAMARA COMOLLI BOUTIQUE DEBUTS IN THE TEGERNSEE



Tamara Comolli is thrilled to announce the opening of her second retail Boutique – located on the picturesque Lake Tegernsee in Bavaria, Germany.

The gorgeous new Boutique can be found nestled between mountains and the lakeside in the historic village of Rottach-Egern. This scenic area, fondly referred to as “the ‘Hamptons’ of Germany”, is also home to the European headquarters of the TAMARA COMOLLI FINE JEWELRY COLLECTION.

Just one year after the debut of the USA Flagship Boutique in Southampton, New York, European customers from all over the continent will experience the TAMARA COMOLLI Collection showcased in its true spirit.

The sparkling white Boutique, with its magical trompe-l’oeil ceiling depicting the crystal blue skies over the lake, is the perfect backdrop for all of the Color Stories and one-of-a-kind colored gemstones that TAMARA COMOLLI is famous for.

The villages of the Tegernsee attract vacationers year-round for summer and winter sports and sightseeing, and the new Boutique is sure to become another of the ‘jewels’ found dotting this gorgeous countryside.

We look forward to seeing you there!



TAMARA COMOLLI BOUTIQUE
Seestr. 59 · 83700 Rottach-Egern · tel. +49-8022-859-7780
www.tamaracomolli.com · finejewelry@comolli.com



TAMARA COMOLLI FINE JEWELRY COLLECTION

SOUTHAMPTON USA

Tamara Comolli Flag Ship in the Hamptons

The time has come to announce the opening of our first stand alone store!

Over the past 17 years TAMARA COMOLLI FINE JEWELRY has continued to grow into an international brand with world wide recognition. Up to this point, our jewelers and their clientele have only seen selected items from the TAMARA COMOLLI Collection. Now we are finally able to showcase our collection, and its spirit, in its entirety. We are not only excited about the opening of our first store, but also about establishing and growing our USA wholesale business.

The Hamptons is a place which attracts interesting, stylish and fun people from around the country and the world. We found it was the perfect place from which to launch the TAMARA COMOLLI spirit.

We are looking forward to a successful season there and to an exciting summer 2011/12.



TAMARA COMOLLI FINE JEWELRY LTD. INC.
BOUTIQUE · 27 Main Street · Southampton · NY 11968
tel. +1-631-283-7600 · fax +1-631-283-7605
www.tamaracomolli.com · info@tamaracomolliusa.com



TAMARA COMOLLI FINE JEWELRY COLLECTION

EUROPE

Tamara Comolli ... goes Sylt!

TAMARA COMOLLI BOUTIQUE OPENING ON SYLT



The beautiful Northern German Island of Sylt is the German equivalent of the Hamptons in the USA! Only 2 hours by train away from Hamburg, this place is truly magical!

Seemingly endless beaches invite everlasting strolls; beautiful homes and landscapes with the typical straw covered roofs make this picturesque island feel like home right away.

For many years now, TAMARA COMOLLI has planned to open her second German Boutique here. Small luxury stores in beautiful brick houses, wide streets and the very friendly people here make one always come back for another holiday.



It is an island to discover, and even on rainy days in summer you will find a unique spirit with women wearing TAMARA COMOLLI flip*flops and of course some fun and casual jewellery!

We look forward to seeing you there!



TAMARA COMOLLI BOUTIQUE
Braderuper Weg 2 · 25999 Kampen · tel. +49-4651-889-1002
www.tamaracomolli.com · finejewelry@comolli.com



TAMARA COMOLLI FINE JEWELRY COLLECTION

TAMARA COMOLLI APP

For iPhone



T. Comolli

and iPad



T. Comolli HD

The new TAMARA COMOLLI App brings my world of jewelry to your iPhone and iPad and gives you the opportunity to browse through the collection anytime, anywhere!

Use the little elf to be guided and enjoy the world of TAMARA COMOLLI.



Main Menu



Collection Menu



Collection Page



What's hot Menu



App intro with elf guide



...continuously updated!



TAMARA COMOLLI FINE JEWELRY COLLECTION

2011/2012 NEWS

COLOR STORY EMPIRE



GB_11_004



GB_10_112



GB_11_020



GB_11_003



GB_11_006



GB_10_110



GB_10_111



GB_11_024



GB_11_049



GB_11_050

WHITE!!! This is the 2011 Summer Color! And finally Chandelier earrings!

TAMARA COMOLLI is presenting a wonderful new Collection using the beautifully pure Cacholong gemstone. Set in rose gold and accented with some champagne diamond pavé the famous FLAMENCO bracelet looks just elegant and stunning!

Cacholong, a gemstone as pure as porcelain and just white; a warm elegance featured in 18K rose gold and for the MIKADO FLAMENCO bracelet a subtle brown diamond accent in the clasp.

Enduring, but still very new: Chandeliers! Long, feminine, soft and flowing earrings that beautifully match all our Color Stories! These Chandeliers are also available in a smaller daytime size, which is still just as soft and flowing. Best combined with pendants or the Cabochon TALISMAN ring!

The Cabochon TALISMAN ring sits very comfortably on the hand and is available in a small and large size Cabochon. Jeans and a white shirt together with this selection will be just perfect!

Many other colored gemstones are available for these designs, and I would love to see all FLAMENCO lovers add to their look by wearing the new Chandeliers. They are lightweight and I personally recommend trying them! They are young and feminine, and frame the face with a beautiful glow!

Yours TAMARA COMOLLI



TAMARA COMOLLI FINE JEWELRY COLLECTION

2011/2012 NEWS

COLOR STORY CAMOUFLAGE



GB_11_026



GB_11_027



GB_10_101



GB_11_036



GB_08_055



GB_11_057

Camouflage – jeans and natural shades for your accessories! A perfect everyday Color Story!

This look perfectly matches the modern woman's desire to combine their beautiful leather accessories with jeans; a chic bohemian feel!

We have expressed this color combination in CAMOUFLAGE with gemstones such as smoky-brown Quartz, moody-blue iolite and shades of green Tourmalines.

Personally, I love to combine white with rose gold and therefore I would be happy if you match your outfit with our Camouflage flip*flops with the rose peace pendant and the FLAMENCO Camouflage bracelet!

To top it wear our famous XL CURRICULUM® VITAE ring with the beautiful 8.45cts. of princess-cut Tanzanites with this look.

Yours TAMARA COMOLLI



TAMARA COMOLLI FINE JEWELRY COLLECTION

2011/2012 NEWS

CURRICULUM® VITAE RINGS



GB_08_106



CV_DIA_WB



GB_10_101



GB_08_107



GB_10_067



GB_08_100



GB_08_095



GB_08_096



GB_11_052



GB_11_055



GB_11_042



GB_11_048

CURRICULUM® VITAE: rings that make you play!

CURRICULUM® VITAE rings: the world of famous rings is topped to the best in 2011. Established since almost 18 years now: the famous CV rings have conquered the world. The subtle spinning princess-cut sapphires in all colors and diamonds are available in a large variety of styles and models.

For Basel 2011 we are presenting a very comfortable wearable new design in the CV4 and CV3.5 model with only 3 princess-cut diamonds in sizes 3.5mm and 4mm. Elegantly supported by a channel-set diamond line.

For the all around version of the CV ring where the gemstones are beautifully combined to Color Stories, we have added a "only Tanzanite"-version for the CV large model.

First and stunning we are presenting the CV large model now also with a total 4.80cts. of large princess-cut diamonds and 1.40cts. of diamond pavé: luxury at its best. Beautiful and elegant is the rose gold champagne diamond combination with a line of natural diamonds on the sides.

Choices are endless – enjoy playing!

Yours TAMARA COMOLLI



TAMARA COMOLLI FINE JEWELRY COLLECTION

2011/2012 NEWS

OCEAN JASPER AND LEATHER LOOP



GB_10_052_BE



GB_10_082



GB_10_083



GB_10_108



GB_10_081



GB_11_005



GB_10_089



GB_11_010



GB_10_036



GB_08_077



GB_11_007



GB_10_034

Natural Bohemian, Neutrals and Safari Chic!

Within our Hippie Glam Collection we have a large variety of news covering the trends for casual basics; browns and beige. The Ocean Jasper Collection with the wild look of this amazing natural gemstone from MADAGASCAR appeals to those lovers of neutral colors.

Amulets and rings in one-of-a-kind patterns as well as the very casual Ibiza look of our LEATHER LOOP bracelets: 18K accessories dangle casually, Peace Signs newly interpreted in our Signature Drop symbol. New leather patterns with a floral leather print in 3 colors allow a versatile look by exchanging the leather straps in the bracelets.

The new Ocean Jasper earrings are an expression of a typical Safari style, bohemian look. PAISLEY ornaments such as PAISLEY Peace Sign pendants in 2 sizes and the Hippie Flower work well both with leather and chains.

Yours TAMARA COMOLLI



TAMARA COMOLLI FINE JEWELRY COLLECTION

2011/2012 NEWS

COLOR STORY CANDY



GB_10_079



GB_10_096



GB_11_029



GB_10_080



GB_03_103



GB_11_008



GB_11_021



GB_10_060



GB_10_051



SMALL_THINGS



GB_02_092/I



GB_11_046_BE

Candy colors – bright and vibrant! Best in 18K yellow gold!

An everlasting subject: summery bright and intense colors: this year's summer fashion highlight is also a focus in our Collection: both turquoise and candy colors work at their best set in 18K yellow gold.

Every woman should have a piece of summer from our Collection either as pendants or even bracelet best with the stunning world of gemstones featured in our famous MIKADO FLAMENCO bracelet.

A new large Chandelier earring can match all color combinations and by itself is a stunning design. Choose from our large variety of colors in the typical drop earrings available in 2 sizes. AND – best of all combine the MIKADO rings to a wonderful bouquet of colorful flowers for your hands.

Enjoy the summer!

Yours TAMARA COMOLLI



TAMARA COMOLLI FINE JEWELRY COLLECTION

2011/2012 NEWS

TAMARA COMOLLI CLASSICS



GB_10_090



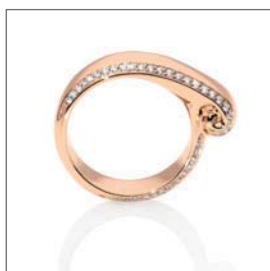
GB_10_091



GB_10_078



GB_10_093



GB_11_028



GB_09_027



GB_09_028



GB_11_054



GB_10_102



GB_10_070



GB_10_061



GB_11_005

Diamonds elegant, classical and wearable!

For 2011-2012 we have designed a significant Collection using a variety of white and champagne – or so called Cappuccino diamonds for our typical designs.

The famous ALWAYS DIAMOND bracelet and SNOWFLAKES reversible diamond necklace have been added in 18K rose gold. CURRICULUM® VITAE rings in combination with natural brown and champagne diamonds perfectly round out our rose gold and diamond line.

Top this with a CURRICULUM® VITAE ring in the large size, which showcases over 5 carats of diamonds and can be accented with diamond pavé on the sides, all set in 18K white gold. A new CV ring addition, the CV4 and CV3.5 designs provide a very wearable diamond look and fit.

For the casual look, some SIGNATURE Peace pendants – accented with diamond pavé – and for the very understated look, the LEATHER LOOP bracelets with diamond pavé accents.

Yours TAMARA COMOLLI



TAMARA COMOLLI FINE JEWELRY COLLECTION

FALL PREVIEW 2011/2012

COLOR STORY WILDBERRY



GB_10_063



GB_10_076



GB_10_085



GB_11_056



GB_10_068



GB_10_072



GB_11_018



GB_11_019



GB_11_018_3ER



GB_11_028



GB_07_073



GB_11_045

Indulgent in warm 18K rose gold, we present a beautiful selection of designs for Fall / Winter 2011! The Color Story Wildberry is a pure sensation of rose, purples and violets. All classical TAMARA COMOLLI designs are available in those beautiful berry colors.

New designs have been added for this Color Story, such as both sizes of the PAISLEY Chandelier earrings, and CV rings.

A perfect match is also the pure rose gold PAISLEY ring and pendant and the 3 sizes of Hoops earrings.

Yours TAMARA COMOLLI



TAMARA COMOLLI FINE JEWELRY COLLECTION

FALL PREVIEW 2011/2012

COLOR STORY BELUGA



GB_07_050B



GB_07_035



GB_09_021



GB_11_044



GB_10_097



GB_10_097_3ER

Indulgent in warm 18K rose gold, we present a beautiful selection of designs for Fall / Winter 2011! The Color Story Beluga is a very strong statement for those who adore black and want to portrait this also in fine jewelry.

Many classical TAMARA COMOLLI designs are available in 18K rose gold with the pure black Onyx gemstone. New designs have been added for this such as large PAISLEY Chandeliers, the TALISMAN ring and the XL MIKADO pendant.

A perfect match is also the pure rose gold PAISLEY ring and pendant and the 3 sizes of Hoops earrings.

Yours TAMARA COMOLLI



TAMARA COMOLLI FINE JEWELRY COLLECTION

2011/2012 NEWS

CHANDELIERS ALL OVER!!!



GB_10_112



GB_11_020



GB_11_018



GB_11_019



GB_10_096



GB_11_029



GB_10_097



GB_11_008

Small and large matching our famous Color Stories.

PAISLEY



GB_10_098



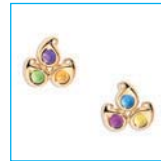
GB_11_028



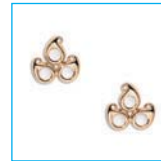
GB_10_103



GB_11_002



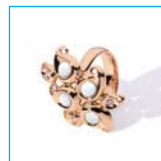
GB_11_021



GB_11_024



GB_11_049



GB_11_051



GB_10_081



GB_11_005

The 2010 New Collection with our Signature Symbol has established and we have now created the link into our classic Collection matching Color Stories and adding a new large Chandelier earring and a floral feminine ring; PAISLEY can complement a MIKADO FLAMENCO bracelet or any other of our Signature designs. Thus we have also designed the PAISLEY DROP ring a more ornamental version of our SIGNATURE DROP rings. Also available with Pavélines.

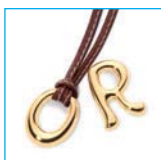
The large Chandeliers now are available in several Color Stories such as Turquoise (of course!); Beluga (in rose gold very chic with black Onyx), Candy simply stunning with a multitude of gems and the new Color Story EMPIRE! With white Cacholong or the Wildberry rose gold Color Story.



TAMARA COMOLLI FINE JEWELRY COLLECTION

2011/2012 NEWS

DARLINGS



GB_10_109



GB_10_042_A



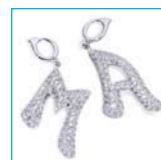
GB_10_042_C



GB_10_042



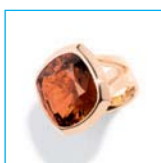
GB_11_058



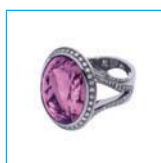
GB_11_053

Things with a meaning: The Alphabet letters designed as pendants in a silver large version to be worn very casual on long thin leather strings, and in a small gold version that will also be available as pavé diamond design. The "Darlings" are meant to be the Initials of the beloved ones. A mother who wears the name initial of her child; those letters are very soft with rounded edges and very feminine.

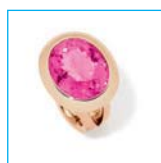
COLLECTIBLES



GB_10_105



GB_11_023



GB_10_113



GB_11_034



GB_11_033

For the one-of-a-kind Collection we have created an amazing selection of one-of-a-kind designs with PARAIBA Tourmalines, Tourmalines from Mozambique and very new with Tanzanites. Glamorous pendants, necklaces and amazing rings.

As always we feature for the Cushion rings large rare stunning gemstones in our typical designs, Candy simply stunning with a multitude of gems and the new Color Story EMPIRE! with white Cacholong or the Wildberry rose gold Color Story.

flip*flop



GB_10_107



GB_11_036



GB_10_009



GB_10_010

As a fun bejeweled accessory TAMARA COMOLLI has made some fun **flip*flop** in four colors (seabreeze/dolphin/buddha/camouflage); a crystal studded Bouquet pendant and a rose Peace pendant gives some glitz for the toes. More colors hopefully to come and only available in TC Boutiques.



TAMARA COMOLLI

FINE JEWELRY COLLECTION

SHOP IN SHOP CONCEPT

The shop-in-shop concept was created so as to ensure a customized corporate design of the TAMARA COMOLLI FINE JEWELRY COLLECTION brand not only in her own shops but also during representations at fairs, events, as well as usage by the brand partners.

This presentation unit, designed & conceived personally by TAMARA COMOLLI is specifically created so as to represent the basis of her philosophy... simple yet stylish and elegant... as in her own shops.

The all in white concept includes stand-alone display showcases either in the typical TAMARA COMOLLI drop form or as an alternative, in a classical rectangular form. The back wall made of white wooden panels in the Hamptons style, has an integrated TAMARA COMOLLI electrical logo illuminated in turquoise.

This aggregate, attractive and eye-catching shop-in-shop concept helps to create a clear visualization of the brand at the same time as acting as a marketing and sales tool. What makes this concept so individual is its flexibility, adaptability and the fact that it is adjustable to each single location and site.

TECHNICAL DETAILS

SHOWCASES IN DROP FORM

The freestanding white showcase in drop form is upholstered with a white leather tray. On the back side of the showcase you will find a lockable storage compartment for books, decoration material, and other miscellaneous items. The showcases are built on steerable and lockable discreet aluminium roller applications.

The measurements are length: 85 cm / width: 56 cm / height: 100 cm

The surface is made of MDF-GF and RAL 9016 silk matt finish. The glass surface of the showcases is in 3 opti white. The sides are in the form of a two part curved panel made of transparent glass.



Showcase drop form



Showcase detailed view



TAMARA COMOLLI FINE JEWELRY COLLECTION

THE RECTANGULAR DESIGN SHOWCASES

The freestanding white showcase rectangular is upholstered with a white leather tray. On the back side of the showcase you will find a lockable storage compartment for books, decoration material, and other miscellaneous items. The showcases are built on steerable and lockable discreet aluminium roller wheels

The measurements are length: 100 cm / width: 55 cm / height: 105 cm

The surface is made of MDF-GF and RAL 9016 silk matt finish. The glass surface of the showcases is in 3 opti white.



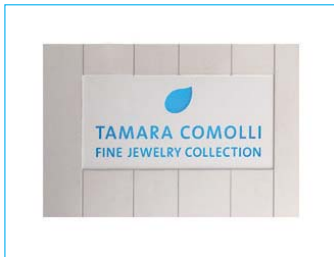
Showcase rectangular



TAMARA COMOLLI FINE JEWELRY COLLECTION

THE BACKWALL

The main focal point of the shop-in-shop concept is the case by case applicability of the adjustable backwall wood panel made of "spruce". The special white streak coating is visible so as to accentuate the turquoise illuminated logo.



Logo in turquoise



Backwall and showcases drop form



Backwall and showcase rectangular